

DITCHAM PARK SCHOOL

GCSE OPTIONS BOOKLET

Courses of Study
September 2020 – June 2023



Contents

The GCSE Curriculum at DPS pages 3 - 7

Core Subjects pages 8 - 12

English Language

English Literature

Mathematics

Science

Option Subjects pages 13 – 26

Art and Design

Business

Computer Science

Design and Technology

Drama

French

Geography

History

Latin

Music

PE

Religion, Philosophy and Ethical Studies

Spanish

This booklet is designed to help you choose your GCSE subjects. As well as some general advice, it contains descriptions written by the various Heads of Departments at Ditcham Park School which will give you an insight into each subject and its appropriateness or otherwise for you as a subject choice.

Some people have no difficulty choosing their courses as they are quite sure which subjects they wish to pursue at GCSE level. For others, however, the choice is less obvious. If this is the case for you, I hope this booklet will help you in your decisions. Of course individual Heads of Department will be able to give you more advice, and I encourage you to make the most of this opportunity over the coming weeks.

R Howard

Deputy Head of Seniors

The GCSE Curriculum at DPS

Course Components

Senior Curriculum Map (25 lessons per week)																									
	1	2	3	4	5	6	7	8	9	10	11	12	13	14	15	16	17	18	19	20	21	22	23	24	25
7	English			Maths			Science			Lang			ICT	His	Geo	Lat	RE	Art	DT	Dra	Mus	PE	G		
8	English			Maths			Science			Lang			ICT	His	Geo	Lat	RE	Art	DT	Dra	Mus	PE	G		
9	English			Maths			Science						Option1	Option 2	Option 3	Option 4	G	G							
10	English			Maths			Science						Option1	Option 2	Option 3	Option 4	G	G							
11	English			Maths			Science						Option1	Option 2	Option 3	Option 4	G	G							

There are 25 one hour lessons per week in the GCSE Timetable at Ditcham Park School.

Each week a GCSE pupil will have:

- 5 hours of English lessons
- 4 hours of Mathematics lessons
- 6 hours of Science lessons
- 2 hours per week in four different option subjects.
- 2 hours of games

The timetable of the day is provided below.

Senior Timetable		
08:40	09:40	Period 1
09:40	10:40	Period 2
10:40	11:00	AM Break
11:00	12:00	Period 3
12:00	13:00	Period 4
13:00	14:00	Lunch / Reg
14:00	14:45	Mini Lesson
14:45	15:45	Period 5

The GCSE Curriculum at DPS

Course Components

GCSE pupils at Ditcham Park School will follow a broad course of study consisting of a mix of compulsory and optional GCSE and non GCSE subjects.

All students will follow compulsory GCSE courses in:

- English Language
- English Literature
- Mathematics
- Science – either double or triple award

With regard to Science, pupils will have two choices.

- Study towards the three separate sciences (Biology, Chemistry & Physics – three GCSEs).
- Study towards the Trilogy Course (equivalent to two GCSE's). This course covers the same topics covered within the separate sciences course but in less depth.

In Form 3, all pupils will begin a course of study towards the three separate sciences. At the end of Form 3, pupils will either continue with their study towards the three separate sciences, or be transferred into the Trilogy course. This decision will be made after careful reflection of pupils' performance through Form 3, and the potential they are showing. The final decision is at the discretion of the Head of Science.

It is important to note that the Trilogy Course, does not limit a pupils' potential choices at 6th Form College, but in fact allows them to go on to choose any of the three separate sciences at AS or A level, as long as the GCSE grades achieved within the Trilogy course are high enough.

The GCSE Curriculum at DPS

Course Components

Selecting GCSE subjects is an exciting and important stage in each pupil's educational journey. Whilst we make the decision for the pupils in terms of the compulsory subjects listed above, the DPS option blocks represent the opportunity for our pupils to begin to personalise their study.

There are four option blocks which contain a range of GCSE subjects including:

- Art & Design
- Business
- Computer Science
- Design & Technology
- Drama
- French
- Geography
- History
- Latin
- Music
- Physical Education
- Religion, Philosophy and Ethical Studies
- Spanish

These subjects will be arranged into four option blocks in such a way as to satisfy as many student subject selections as possible based on a straw poll of student preferences taken in March.

Non GCSE courses in Personal/Social Education and Citizenship as well as Games complete the GCSE timetable

The GCSE Curriculum at DPS

Making Choices

At Ditcham Park School, pupils and their parents are encouraged to consider individual strengths, weaknesses and interests within the context of trying to achieve a broad and balanced GCSE curriculum.

It must be emphasized to Form 2 pupils and their parents that once a pupil has embarked on a GCSE subject, he or she is expected to complete it. It is therefore very important for each pupil to be following courses which they are both interested in, but more importantly are within his or her capabilities. Please consider this point seriously when making choices, taking account of the advice given by our experienced teaching staff.

The English Baccalaureate was introduced as a way of measuring school performance across a range of academic subjects. It is not a qualification in itself. The measure recognises pupils achievement across a range of academic subjects consisting of English, Mathematics, History or Geography, the Sciences and a Language. The subjects included are designed to ensure that all pupils have the opportunity to study a broad range of subjects, which will not limit their future progression and options.

Even though three components of the English Baccalaureate are compulsory at DPS, in finalising option choices it is possible that a pupil can select a range of GCSE subjects which does not fulfil the English Baccalaureate criteria. This is a position we are happy to accommodate in our aim to recognise and value the range and differing needs of our pupils.

Subject numbers are carefully monitored. Although GCSE classes are on average approximately 10-14 per class we do require a minimum of approximately 5 pupils for the class to be viable.

The GCSE Curriculum at DPS

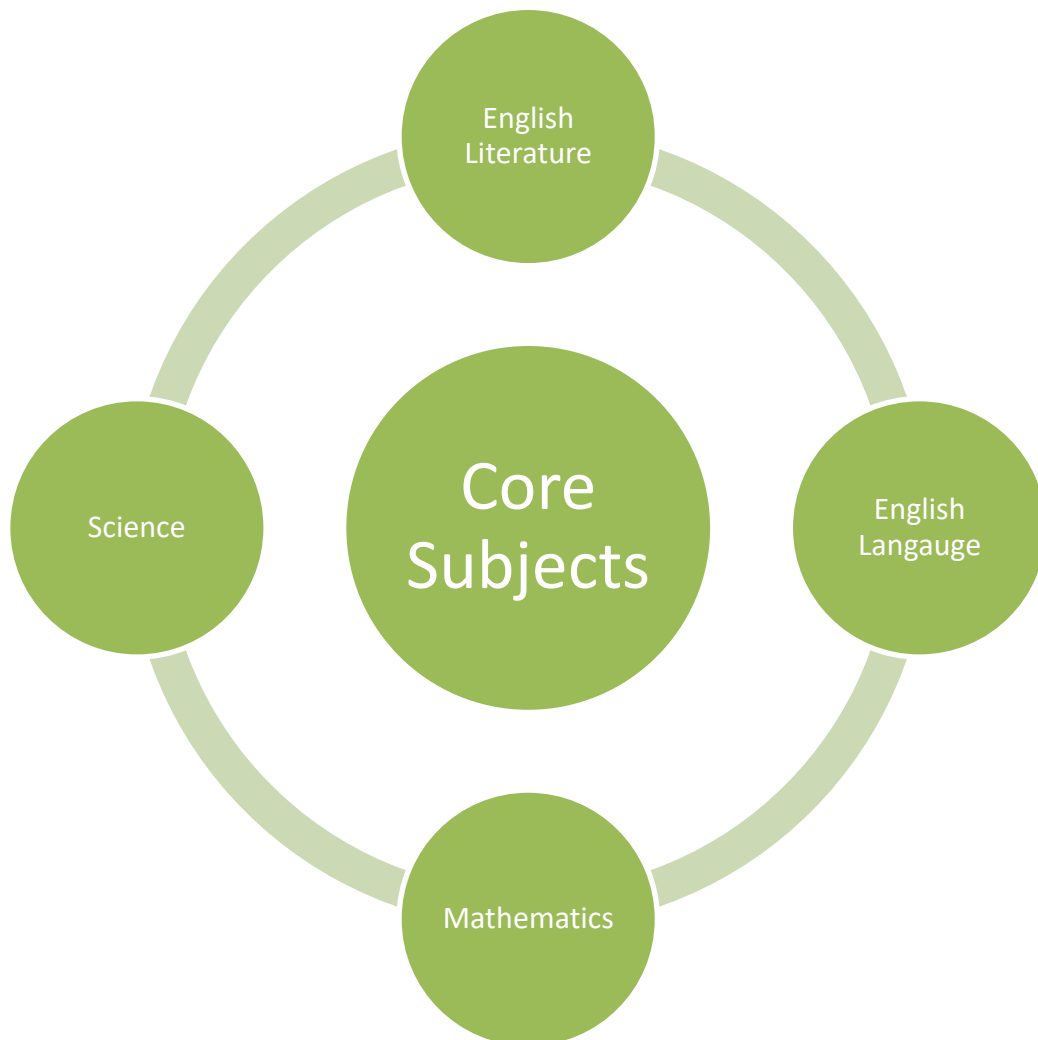
Language Choices

We believe that every pupil should include the study of a modern foreign language as part of their GCSE education, so strongly encourage every pupil at Ditcham Park School to choose either French or Spanish as one of their four choices within the Option blocks. However for the first time, the study of a modern foreign language is not compulsory, so pupils and parents are free to make their own decisions in this regard.

It is worth noting again that studying a foreign language is a requirement of the English Baccalaureate, and although not compulsory at Ditcham Park School, the school supports the underlying principle inherent in the English Baccalaureate, namely study across a broad range of subjects which includes a language selection.

Of course, pupils who are passionate about language may study two languages, by choosing both Spanish and French within the option blocks, and may in fact enrich their studies of languages further by pursuing Latin as well.

DPS Core Subjects



English Language

Ms K Senior
Head of English
kate.senior@ditchampark.com

Examination Board AQA



Why study English Language?

English Language is the keystone of the curriculum. All subjects require pupils to read with understanding and write with clarity according to purpose.

At GCSE level, marks are allocated for proficiency in these skills according to subject need.

For entry into sixth form courses, a good level in English (equivalent to the previous 'C' grade) determines which doors are open to you and indeed, this requirement continues with university entries where a good grade in English is a necessity on most courses.

On a broader perspective, the ability to communicate is a vital life skill enabling pupils to know more about the world they live in and more about themselves as individuals. It gives them a voice.

What will I learn?

English Language Course Content

I will learn to read fluently and write effectively. I should be able to demonstrate a confident control of Standard English and I should be able to write grammatically correct sentences, deploy figurative language and analyse texts from a variety of sources.

Examination and Assessment

The course is linear, which means all examinations will be sat at the end of the course.

It will be assessed via two papers which are both 1 hour 45 minutes long.

- English Language Paper 1 - Explorations in Creative reading and writing
- English Language Paper 2 - Writers' viewpoints and perspectives

Each paper is worth 50% of the final grade.

A separate grade will be awarded for speaking and listening. It will not be part of the final English Language level awarded. This assessment will take place in class at any time during the two year course and will include presenting, responding to questions and feedback using Standard English.

English Literature

Ms K Senior
Head of English
kate.senior@ditchampark.com



Examination Board AQA

Why study English Literature?

English Literature is part of our cultural heritage. It enables pupils to live their own lives whilst experiencing that of others.

Readers are taken on journeys to other places, other times and other situations. They learn about society itself and their own place in the wider picture.

The study of literature provides the basis for a lifelong love of reading and also readily supports the acquisition of increasingly sophisticated ways of thinking and use of language. For this reason, the teaching and learning of English Literature and English Language go hand in hand within the classroom.

The course offers excellent preparation for AS and A-level English Literature, as well as giving pupils a grounding in a wide variety of literature that will stay with them forever.

What will I learn? [English Literature Course Content](#)

You will read a range of literature and develop your ability respond with good understanding, making connections across various texts. You will be given the opportunity to discuss, explain, analyse and evaluate your findings in a way which includes the use of grammatical terminology and other literary and linguistic terms needed.

Examination and Assessment

The course is linear, which means all examinations will be sat at the end of the course.

It will be assessed via two papers:

- English Literature Paper 1 - Shakespeare and the 19th Century novel
- English Literature Paper 2 - Modern texts and poetry

Paper 1 is worth 40% of the final grade and the time allowed is 1 hour and 45 minutes.

Paper 2 is worth 60% of the final grade and the time allowed is 2 hours 15 minutes.

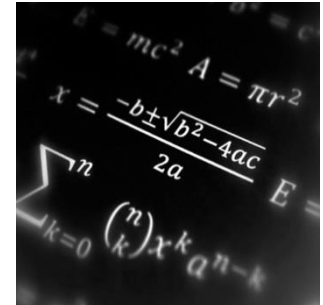
Mathematics

Mrs S Whittle

Head of Mathematics

sarah.whittle@ditchampark.com

Examination Board OCR



Why study Mathematics?

Mathematics is a highly interconnected discipline which is essential to everyday life. Rational and logical thought is required in many areas, whether in a moral or career capacity.

Just as languages provide the building blocks and rules we need to communicate, maths uses its own language, made up of numbers, symbols and formulas, to explore the rules we need to measure or identify essential problems including distance, speed, time, space, change, force and quantities.

Studying maths helps us find patterns and structure in our lives. Practically, maths helps us put a price on things, create graphics, build websites, build skyscrapers and generally understand how things work or predict how they might change over time and under different conditions

When studying Mathematics, you will become more fluent in methods and be able to apply techniques to a range of problems. You will make rich connections across mathematical ideas to develop fluency, mathematical reasoning and competence in solving increasingly sophisticated problems.

For entry into sixth form courses, a good level in Mathematics (equivalent to the previous 'C' grade) determines which doors are open to you and indeed, this requirement continues with university entries where a good grade in Mathematics is a necessity on most courses.

What will I learn? – Mathematics Course Content

You are taught from the following key areas (weightings are in brackets)

- Number (15%)
- Algebra (30%)
- Ratio, proportion & rates of change (20%)
- Geometry and measures (20%)
- Probability & Statistics (15%)

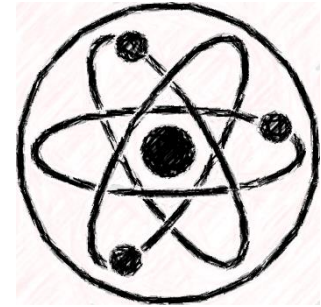
Examination and Assessment

The final GCSE examination will consist of three, 1 hour 30 minute exam papers, two of which will be calculator and one non calculator paper.

Each paper carries equal weighting.

Science

Mrs L Hoad
Head of Science
laura.hoad@ditchampark.com



Examination Board AQA

Why study Science?

Science has something to offer every student, whatever your aspirations. From trainee chef to nuclear physicist, construction apprentice to cancer researcher, everyone needs some level of relevant science understanding. There is no better way to learn about science than through purposeful practical activities and these form a large part of the science lessons at GCSE.

In Form 3 the topics covered are common to whichever Science GCSE route you follow. The choices at GCSE are to follow the three separate Sciences: - Biology, Chemistry and Physics or to follow the Trilogy course which is equivalent to two GCSEs and covers the **same** topic areas as the separate Sciences but in less depth. Decision in what pathway is best for you will be taken at the end of Form 3. This will be a combination of student option preference and teacher assessment of aptitude for the separate science course.

What will I learn? – Science Course Content

Biology

- Cell biology
- Organisation
- Infection and response
- Bioenergetics
- Homeostasis and response
- Inheritance variation and evolution
- Ecology

Chemistry

- Atomic structure and the periodic table
- Bonding, structure and properties of matter
- Quantitative chemistry

- Chemical changes
- Energy changes
- The rate and extent of chemical change
- Organic chemistry
- Chemical analysis
- Chemistry and the atmosphere
- Using resources

Physics

- Forces
- Energy
- Waves
- Electricity
- Magnetism and electromagnetism
- Particle model of matter
- Atomic structure
- Space physics (Separate Physics only)

Examination and Assessment

The course is linear, which means all examinations will be sat at the end of the course.

There is no controlled assessment in any of the science GCSEs. Students will be assessed on their practical skills and understanding as well as subject knowledge within the 3 subject areas.

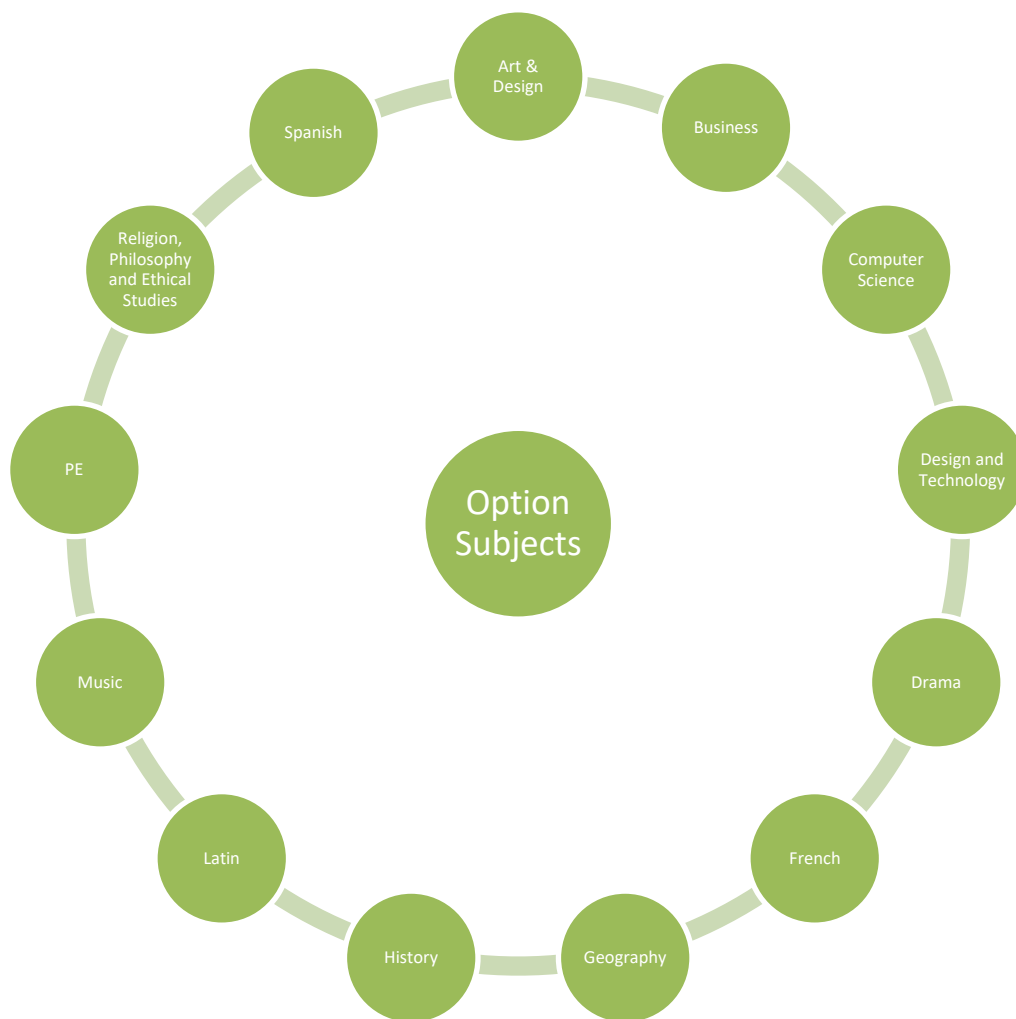
Trilogy

Six papers (each lasting 1 hour 15 minutes and each equally weighted); two biology, two chemistry and two physics. Each will assess different topics.

Biology/Chemistry/Physics

Two papers for each subject (each lasting 1 hour 45 minutes and each equally weighted).

DPS Option Subjects



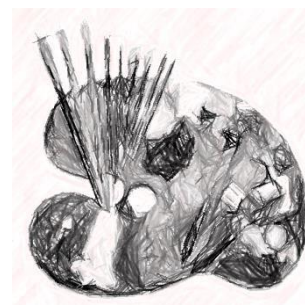
Art and Design

Mrs P Metcalfe

Head of Art

penny.metcalfe@ditchampark.com

Examination Board AQA



Why study Art & Design?

Studying GCSE Art and Design will develop your creativity and is a key qualification for entry into a wide range of careers in the Arts. The creative industries are the fastest growing area of the economy: so creativity isn't only about pursuing artistic interests, it can also open the door to exciting career opportunities. Creativity is a key transferrable skill and one which is increasingly prized by employers both within and outside the arts.

Our Art and Design course is flexible offering a high degree of choice of subject matter and use of a wide range of different media, processes and techniques. Art at Ditcham gives you the opportunity to produce a portfolio of work that you can show to prospective employers or use to help secure a place in higher education and for further progression to Art and Design related courses such as A-level Art, illustration, graphic design, fashion and textiles, photography, film and animation and enhanced vocational qualifications.

What will I learn? – Art & Design Course Content

Art at Ditcham aims to widen pupils' understanding of the world of Art and their place in it. You will be encouraged to think, to draw, to develop skills and personal ideas, to express yourself visually using a variety of materials, and to understand and use a specialist vocabulary and gaining a personal visual voice.

Throughout the course you will work on two main themes. One will be a three dimensional sculpture project and the other a two dimensional painting and mixed media project. Each of which you will interpret personally and individually.

Within each project you will need to develop knowledge of other artists and designers in history and contemporary culture. Trips to art galleries, museums and places of interest are an integral part of the course.

Sketchbooks are essential and enable you to record a very personal response to themes which can be used in a variety of ways to record thoughts, feelings and experiences.

Examination and Assessment

- Course work is worth 60% of the final GCSE grade
- Externally set exam is worth 40% of the final grade. This is a practical unit developing art work using materials and processes of your own choice on one of a selection of themes. Preparatory work will take 12 weeks culminating in a 10 hour final piece.

Business

Mr R Howard
Head of Business
richard.howard@ditchampark.com

Examination Board AQA



Why study Business Studies?

Everything in life involves Business.

Think about the last piece of clothing you bought and then think of what businesses made that purchase possible. The obvious ones are the shop and factory which produced and sold the item; but there would be dozens of others that were involved through the production and retail process.

Thinking about all these businesses, the people involved and what they each did allows you to begin to understand what Business Studies is all about.

Business is a major part of our daily life and anybody who has a good idea about how businesses work are at an immediate advantage in the future.

What will I learn? Business Studies Course Content

You will apply your knowledge and understanding to different business contexts ranging from small enterprises to large multinationals and businesses operating in local, national and global contexts.

You will develop an understanding of how these contexts impact on business behaviour and also apply your knowledge and understanding to business decision making including; business operations, finance, marketing and human resources, and how these interdependencies underpin business decision making

Examination and Assessment

The course is linear, which means all examinations will be sat at the end of the course.

The course will be assessed by the way of two 1 hour 45 minute examinations.

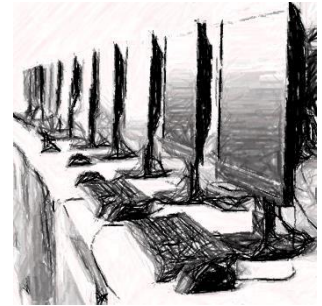
- Paper1: Influences of operations and HRM on business activity
- Paper 2 : Influences of marketing and finance on business activities

Each assessment is worth 50% of the overall final grade

Computer Science

Mr D Harding
Head of Digital Learning
dave.harding@ditchampark.com

Examination Board OCR



Why study Computer Science?

Computers and Computing are a key part of nearly all aspects of our lives. This GCSE will inspire and unlock opportunities for future careers in an area of industry that is rapidly expanding.

The increasing importance of information technologies means there will be a growing demand for professionals who are qualified in this area and those that can demonstrate the fundamentals of what has now become one of the most dominating tools in industry.

What will I learn: Computer Science Course Content

The computer science GCSE will give learners a real, in-depth understanding of how computer technology works.

The qualification will build on the knowledge, understanding and skills established during the KS3 IT lessons. The course will develop critical thinking, creativity, analysis and problem-solving skills through the study of computer programming, as well as developing a solid understanding of how computers work.

The course will cover:

Computer Systems

- Systems Architecture
- CPU's
- Memory
- Storage
- Wired and wireless networks
- Network topologies, protocols and layers
- System security and hacking
- System software

Computational Thinking

- Algorithms
- Programming techniques
- Computational logic
- Data representation

Examination and Assessment

The course has two assessment components.

Component 1: Computer Systems. Written exam looking at the inner workings of computers and how computers can communicate over the internet. 50% of overall grade

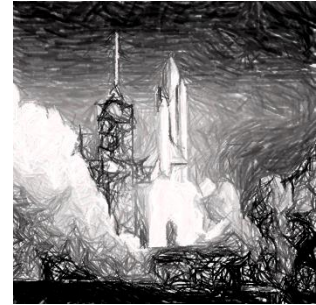
Component 2: Computational thinking and Problem Solving. Written exam set in practically based scenarios. 50% of overall grade.

There will also be a component where pupils will code a solution to a task in a language called 'python'. The weighting for this assessment is TBC by the exam board.

Design & Technology

Mr J Hoad
Head of Design and Technology
james.hoad@ditchampark.com

Examination Board AQA



Why study Design & Technology?

*“Design and Technology is a phenomenally important subject.
Logical, creative and practical, it’s the only opportunity students have to apply what they learn in Maths and Science.”*

Sir James Dyson Founder and Chairman of Dyson and Patron to the D&T Association

GCSE D&T opens the door to a wide range of careers in the creative, engineering and manufacturing industries. It is also excellent preparation for careers in many other fields including medicine, law and computer science. Whatever career you choose, the knowledge and skills you learn, particularly those concerned with rapidly developing technologies, will be extremely valuable. You will also develop skills, such as teamwork and time management which are highly prized by employers.

The new D&T course covers woods, metals, polymers, systems, electronics, card/graphics and fabrics/textiles in a single qualification.

What will I learn?

Design & Technology Course Content

You will build on what you learnt about designing and making in Key Stage 3.

You will use your knowledge and skills to design and make new and better solutions to real problems - on your own and with others - working with the materials you choose.

Key areas of development will include;

- Understanding users, their needs and their characteristics
- Designing
- Using testing, evaluation and the views of users to improve designs
- Learning about materials
- Analysing products
- Learning how things work
- Evaluating your own work and that of others

Examination and Assessment

The course will be assessed by the way of one 2 hour written examination and one piece of non examined assessment (coursework)

Drama

Mrs S Wey

Head of Drama

susie.vey@ditchampark.com

Examination Board Edexcel



Why study Drama?

A young person with a successful GCSE Drama qualification has the following advantages.

- The starting block to pursuing a career in Theatre and other Creative Industries as an actor, a director, a producer, a playwright, a designer, a stage manager or administrator
- The top 3 most desirable skills employers are looking for:

LinkedIn recently published findings for the top 3 skills employers are looking for in 2020 and beyond. All of these skills are highly developed during the GCSE Drama course and include...

CREATIVITY 'drama creates individuals who can think outside of the box and take risks'

COMMUNICATION 'drama allows individuals to develop the ability to effectively communicate ideas in order to persuade colleagues and stakeholders to follow your lead'

COLLABORATION 'drama develops the ability to work effectively as part of a team to brainstorm ideas, problem solve and devise innovative solutions'

The course also provides the opportunity for pupils to work practically as well as academically and to follow an EXCITING and VIBRANT programme of study which will involve them in experiencing LIVE THEATRE PRODUCTIONS and participating in WORKSHOPS with professional actors/theatre companies

Examination and Assessment

Component 1: Devising

(Practical and written coursework worth 40% of GCSE)

Content overview

- Create and develop a **devised piece from stimulus**
- Performance of this devised piece or design realization for this performance.
- Analyze and evaluate the devising process and performance

Assessment overview

- Internally assessed and externally moderated.
- Students produce a portfolio covering the creating and developing process and analysis and evaluation of the process.
- A devised performance/design realization.

Component 2: Performance from Text

(Practical coursework worth 20% of GCSE)

Content overview

- Students will either perform in and/or design for **two key extracts** from a performance text.

Assessment overview

- Externally assessed by a visiting examiner.
- Group, solo and/or partner-based routes for assessment.

Component 3: Theatre Makers in Practice (Written examination worth 40% of GCSE)

Content overview

- Practical exploration and study of **one complete performance text**.
- Live theatre evaluation

Assessment overview

- Examination of 1 hour and 45 minutes.

French

Mrs H Bond
Head of Modern Foreign Languages
heather.bond@ditchampark.com

Examination Board WJEC



Why study French?

1. A world language More than 270 million people speak French on the five continents. The OIF, an international organisation of French-speaking countries, comprises 77 member States and governments.

2. A language for the job market The ability to speak French and English is an advantage on the international job market. A knowledge of French opens the doors of French companies in France and other French-speaking parts of the world (Canada, Switzerland, Belgium, and the continent of Africa). As the world's fifth biggest economy and third-ranking destination for foreign investment, France is a key economic partner.

3. The language of culture French is the international language of cooking, fashion, theatre, the visual arts, dance and architecture.

4. A language for travel France is the world's top tourist destination and attracts more than 79,5 million visitors a year. French also comes in handy when travelling to Africa, Switzerland, Canada, Monaco, the Seychelles and other places.

5. A language for learning other languages French is a good base for learning other languages, especially Romance languages (Spanish, Italian, Portuguese and Romanian) as well as English, since fifty per cent of current English vocabulary is derived from French.

6. Language Trip

At Ditcham we aim to run a language trip on alternate years

What will I learn? – French Course Content

Theme 1: Identity and Culture

Personal identity within the context of family, friends and the wider community, leisure activities and technology, typical lifestyles, daily routine, food, holiday.

Theme 2: Local, National, International and Global Areas of Interest

Festivals, traditions, memorable events, sporting events in target language countries and cultures, and global events, charity-related activities, global poverty, fundraising events, key features and activities of a region or town.

Theme 3: Current and future study and employment

Studying at school and beyond, plans for after GCSEs and beyond, preparing for work and employment, work experience.

Examination and Assessment

The linear course will be assessed by the way of four examinations, each worth 25% of the overall final grade.

- Listening Paper (45 mins) + Reading Paper (1 hr 15 mins) Taken together
- Speaking Paper (10-12 mins total)
Conducted by the teacher from March of Form 5
- Writing Paper (1h 15 mins)

Geography

Mrs R Turner
Head of Geography
rose.turner@ditchampark.com

Examination Board AQA



Why study Geography?

Geography is, in the broadest sense, an education for life and for living. Learning through geography, (whether gained through formal learning in lessons or experientially through fieldwork) helps us all to be more socially and environmentally sensitive, better informed, and more responsible citizens.

Geography is unique because it bridges the humanities and sciences. Geography recognises the great differences in cultures, political systems, economies, landscapes and environments across the world, and explores the links and inequalities between them.

It is not surprising that those trained as geographers are present in every workplace because of the broad range of skills involved in understanding the world. For example: data collection, statistical analysis, report writing, essay writing, creative data presentation and cartography.

What will I learn? – Geography Course Content

This exciting and relevant course studies geography in a balanced framework of physical and human themes and investigates the link between them.

Students will travel the world from their classroom, exploring case study examples. Students are encouraged to understand their role in society, by considering different viewpoints, values and attitudes.

Unit 1 - Living with the Physical Environment

Topics:

The challenge of Natural Hazards
The Living World
Physical Landscapes in the UK
Geographical Skills

Unit 2 - Challenges in the Human Environment

Topics:

Urban Issues and Challenges
The Changing Economic World
The Challenge of Resource Management
Geographical Skills

Unit 3 - Geographical Applications

Topics:

Issue Evaluation
Fieldwork
Geographical Skills

Examination and Assessment

The course is linear, which means all three examinations will be sat at the end of the course. There is one tier of entry.

- Unit 1 (1 hour 30 mins) - 35%
Living with the Physical Environment
- Unit 2 (1 hour 30 mins) - 35%
Challenges in the Human Environment
- Unit 3 (1 hour 15 mins) - 30%
Geographical Applications

History

Mr G Harris
Head of History
george.harris@ditchampark.com

Examination Board AQA (8145)



Why study History?

Learning about History enables you to understand society today.

Understanding about events and people that shaped who we are is important. History gives us the opportunity to see how daily life has changed over the years, and what goes into fostering that change.

Knowing what events led up to a historically significant situations helps us better predict and influence our own future.

By studying history, you will have a better understanding of the world and what shaped it into the world it is today. You will understand the suffering, joy, and chaos that were necessary for the present day to happen.

What will I learn? – History Course Content

Paper 1: Understanding the modern world

Section A: Period study

- Germany, 1890-1945: Democracy and dictatorship

Section B: Wider world depth study

- Conflict and tension in Asia, 1950-1975

Paper 2: Shaping the Nation

Section A: Thematic study

- Britain; Power and the People
 - c1170 to the present

Section B:

- British depth study including
 - The historic environment
 - Elizabethan England, c1568-1603

Examination and Assessment

The course is linear, which means all examinations will be sat at the end of the course.

The course will be assessed by the way of two 2 hour examinations.

- Paper1: Understanding the modern world
- Paper 2 : Shaping the Nation

Each assessment is worth 50% of the overall final grade.

Latin

Mrs L O'Loughlin
Head of Latin
lucy.oloughlin@ditchampark.com

Examination Board Eduqas



Why study Latin?

- It is sophisticated, challenging and unusual.
- You will discover the fascinating myths and history of the classical world.
- It will be useful in many careers and will look great on your university application!
- You will find learning European languages much easier.
- Latin is very good for your thinking skills: it is a very logical language that can be deciphered like a code, solved like a puzzle.
- Latin literature – 'Superstition and Magic'
You will be introduced to various Latin authors and learn about life in Rome from the Romans themselves. You will see how Roman authors used language techniques to great effect – techniques which you can then transfer to your own writing in English.
- Roman Civilisation – We explore various aspects of life in Roman Britain – Chester Legionary Fortress, Roman villas, roads and baths. Trips to Fishbourne Roman Palace and Bath in Forms 3 and 4 directly support our studies.

What will I learn? – Latin Course Content

There are three strands to Latin GCSE.

- Latin language – you will increase your Latin vocabulary and learn how Latin sentences are constructed so that you can translate stories from Roman myth and history into English. You may also begin to write your own simple sentences in Latin.

Examination and Assessment

The course is linear, which means all examinations take place at the end of the course.

The course will be examined by way of three exams.

- Latin Language (50%) – 1 hour 30 minutes
- Latin Literature (30%) – 1 hour 15 minutes
- Roman Civilisation (20%) – 1 hour

Music

Mr E Williamson
Head of Music
ed.williamson@ditchampark.com



Examination Board AQA

Why study Music?

“Without Music, life would be a mistake” Friedrich Nietzsche.

The new Edexcel GCSE Music qualification (first teaching from September 2016) is designed to inspire you in forming personal and meaningful relationships with music through the development of musical knowledge, understanding and skills. You will be encouraged to engage critically and creatively with a wide range of music, develop an understanding of the place of music in different cultures and contexts, and reflect on how music is used in the expression of personal and collective identities.

What will I learn? – Music Course Content

There are THREE components:

PERFORMING, COMPOSING and APPRAISING

- Develop performing skills in both a solo and ensemble context; develop creative thinking, aesthetic sensitivity, critical awareness, self-confidence, self-motivation and their own musical interests and skills; to perform with control, using phrasing and dynamics appropriate to their chosen styles and moods of music
- Learn skills in composing music and to appreciate the process of creating music; to explore a range of compositional starting points and investigate a range of elements, techniques and resources for developing and manipulating ideas, and turning them into completed pieces of music

- Develop one's listening and appraising skills through the study of music across a variety of styles and genres. The content is grouped into four areas of study, each which contains two set works; reflect on, analyse and evaluate music in aural and/or written form; develop knowledge and understanding of musical elements, musical contexts and musical language to make critical judgements about the repertoire and context of music within the areas of study and the 8 set works; develop a wider listening of pieces for each area of study which will help students relate their learning to other pieces of music

Examination and Assessment

ONE externally examined paper and **TWO** non-examined assessments (NEA)

Component 1: PERFORMING:

30% of qualification; NEA; internally marked and externally moderated; TWO performances: 30 marks each; total: 60 marks

Component 2: COMPOSING:

30% of qualification; NEA; internally marked and externally moderated; TWO compositions: 30 marks each; total: 60 marks

Component 3: APPRAISING:

40% of qualification; Written Examination: 1 hour and 45 minutes; Total: 80 marks

Written Examination in TWO sections:

Section A: Areas of Study, dictation, unfamiliar pieces (68 marks);

Section B: Extended response comparison between a set work and one unfamiliar piece (12 marks)

Physical Education

Mr G Vaudrey
Head of Physical education
graham.vaudrey@ditchampark.com



Examination Board EdExcel

Why study Physical Education?

The GCSE Physical Education full course will appeal to you if:

- You have a keen interest in sport and recreation and always look forward to your PE lessons.
- Take part in sport/recreation outside of class time.
- Want to follow a course that develops knowledge and understanding through practical involvement.
- Want to know more about the benefits of sport and exercise.
- Want to improve your own performance in a range of sports roles.
- Want to study a course that is active and that you will enjoy.
- Are considering a sports-related career or an A' Level/Higher Education course.

What will I learn?

Physical Education Course Content

- develop theoretical knowledge and understanding of the factors that underpin physical activity and sport
- understand how the physiological state affects performance in physical activity and sport

- perform effectively in different physical activities by developing skills and techniques
- develop their ability to analyse and evaluate to improve performance in physical activity
- understand the contribution that physical activity and sport make to health, fitness and wellbeing.

Examination and Assessment

The GCSE course is assessed over four components:

Component 1 (36%) is a written exam paper of 1 hour and 45 minutes on fitness and body systems.

Component 2 (24%) is a written exam of 1 hour and 15 minutes on Health and Performance.

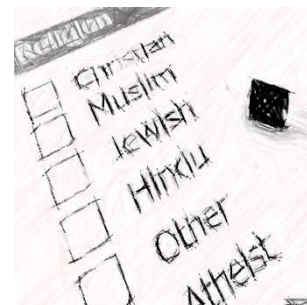
Component 3 (30%) is a non-examined assessment: internally marked and externally moderated.

The assessment consists of students completing **three** physical activities from a set list: **one team activity, one individual activity and one free choice.**

Component 4 (10%) is a non-examined assessment: internally marked and externally moderated. The basis of the assessment is producing A Personal Exercise Programme (PEP).

Religion, Philosophy and Ethical Studies

Mrs J Browning
Head of Religious Studies
jane.browning@ditchampark.com



Examination Board AQA

Why study Religion, Philosophy and Ethics?

Today everyone has an opinion on Religious practices or on a variety of philosophical problems. Questions may arise about god, the universe, war, rights and wrongs in any given situation - both at work and home. Indeed, as humans we are naturally inquisitive and keen to problem solve. In the classroom environment there will be encouragement for pupils to broaden their horizons by debating contemporary, spiritual, moral, cultural and philosophical topics; all key to becoming deep-thinking and considerate individuals ready for the 'outside world'.

Strengthening confidence and opening up the pupils to a seminar environment will assist with their written work, reasoning, logic and self-perception - as well as expanding their capacity for empathy in the confines of an academic qualification.

These critical thinking and reasoning skills can assist with other subjects and for future jobs in the arts, politics, law, journalism, science and beyond.

What will I learn?

Religion, Philosophy and Ethics Course Content.

Component 1 Religious Studies

Studying two main religions from a choice of:

- Christianity or Catholic Christianity
- Islam
- Judaism
- Buddhism
- Sikhism
- Hinduism

Component 2 Religious, Philosophical and Ethical studies

Four thematic - topics are studied, these range from: the existence of God and revelation, crime and punishment, the value of human life, the origins of the universe, religion peace and conflict, human rights and gender, wealth and poverty.

Examination and Assessment

The course is linear, which means all examinations will be sat at the end of the course in May/June 2019. The course will be assessed by the way of two 1 hour 45 minute examinations.

- Paper 1: Religious Studies
- Paper 2: Religious philosophical and ethical studies.

Each assessment is worth 50% of the overall final grade. Spelling, punctuation and grammar are also key.

Spanish

Mr H Bond

Head of Modern Foreign Languages

heather.bond@ditchampark.com

Examination Board WJEC



Why study Spanish?

Spanish is more widely spoken in the world as a native language than English. With over 400 million native speakers of Spanish, it is the official language of 21 countries. In the US, there are more Spanish speakers than in Spain. It is spoken in all of Central America and, with the exception of Brazil, South America too.

New Spanish-speaking economies are emerging post-Brexit. This heralds the start of new trade opportunities outside Europe. South and Central America, will become ever more important to the UK. To compete on the global job market, we must have the same skills as counterparts from overseas and speak their language as they do ours.

Here are nine more reasons to study Spanish:

1. Great opportunities for your gap year.
2. Fantastic holiday venues be it the Costas, Los Picos De Europa or city breaks in Madrid
3. For music lovers, festivals of Benacassim in Valencia and Ushaia in Ibiza, popular with the latest and bravest of the dance, pop and rock world.
3. For the sports lovers. Real Madrid and Barcelona FC. Not to mention their football heroes Suárez, Ronaldo, Torres, Ramos.
5. For the food lovers. Tapas, chorizo, paella, gazpacho, chocolate con churros, chupa chups.
6. For the fashion lovers. The shops of Zara and Mango.
7. For the art lovers. The art of Picasso, Gaudi, Dalí, Goya, Miró.
8. A warm and welcoming people who will just love it if you can speak their language.
9. A school trip to Spain on alternate years

What will I learn? – Spanish Course Content

Theme 1: Identity and Culture

Personal identity within the context of family, friends and the wider community, leisure activities and technology, typical lifestyles, daily routine, food, holiday.

Theme 2: Local, National, International and Global Areas of Interest

Festivals, traditions, memorable events, sporting events in target language countries and cultures, and global events, charity-related activities, global poverty, fundraising events, key features and activities of a region or town.

Theme 3: Current and future study and employment

Studying at school and beyond, plans for after GCSEs and beyond, preparing for work and employment, work experience.

Examination and Assessment

The course is linear, which means all papers will be sat at the end of the course in May/June 2019. The course will be assessed by the way of four examinations.

Listening Paper (45 mins) + Reading Paper (1 hr 15 mins) Taken together

Speaking Paper (10-12 mins total) Conducted by the teacher from March of Form 5

Writing Paper (1h 15 mins)

Each assessment is worth 25% of the overall final grade.